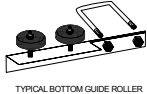


OUTSIDE LOOKING IN GATE OPENS TO THE \_\_\_\_\_

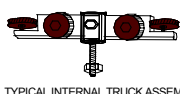
COLOR = \_\_\_\_\_



TYPICAL TRUCK POST BRACKET



TYPICAL BOTTOM GUIDE ROLLER



TYPICAL INTERNAL TRUCK ASSEMBLY

**FABRICATION SPECIFICATION:**

**SLIDE GATE FRAME:**

ALL MEMBERS OF GATE TO BE FULLY WELDED TOGETHER TO FORM A RIGID FRAME.  
 1/2" DIAMETER GALVANIZED ADJUSTABLE TRUSS RODS TO BE INSTALLED INTO EACH PANEL OF GATE TO INSURE STABILITY OF GATE FRAME & ALLOW FOR ADJUSTMENT  
 EACH GATE TO HAVE TWO INTERNAL ROLLER BEARING GUIDE WHEELS CALLED TRUCK ASSEMBLIES.  
 EACH TRUCK ASSEMBLY TO HAVE 4 FACTORY LUBRICATED AND SEALED 2" DIAMETER WHEELS EACH AND 2 GUIDE WHEELS EACH TO INSURE TRUCK ALIGNMENT INSIDE OF ONE PIECE TOP TRACK.  
 TRUCK ASSEMBLIES TO BE HELD TO TRUCK POST BRACKETS USING A 7/8" DIAMETER BALL BOLT WITH 1/2" THREADED SHANK AND LOCK NUT.  
 GALVANIZED STEEL TRUCK BRACKETS TO BE SECURED TO POSTS USING TWO 1/2" DIAMETER U-BOLTS.  
 EACH GATE TO HAVE 2 BOTTOM GUIDE ROLLERS ATTACHED TO BOTTOMS OF GATE POSTS.  
 BOTTOM GUIDE ROLLERS TO HAVE TWO 4" DIAMETER ADJUSTABLE RUBBER WHEELS.  
 BOTTOM HORIZONTAL OF GATE TO SLIDE BETWEEN ROLLERS TO INSURE PROPER ALIGNMENT.

**GATE INFILL:**

GATE INFILL PANELS TO BE FABRICATED USING 1-1/2" x 1-3/8" x 1-1/2" x 1/8" THICK ALUMINUM CHANNEL HORIZONTALS. HORIZONTALS TO BE PUNCHED TO ACCEPT 1" x 18 GAUGE GALVANIZED STEEL TUBE PICKETS  
 PICKETS TO BE ATTACHED TO HORIZONTAL RAILS USING 1/4" INDUSTRIAL DRIVE RIVETS.  
 HORIZONTAL CHANNELS TO BE WELDED TO GATE UPRIGHTS.

**DIMENSIONS**

- A \_\_\_\_\_ " NOM. GATE HEIGHT
- B \_\_\_\_\_ " ACTUAL FACE TO FACE OF POST
- C \_\_\_\_\_ " COUNTERBALANCE DIMENSION
- D \_\_\_\_\_ " POST LENGTH;
- E \_\_\_\_\_ " PICKET SIZE; \_\_\_\_\_ GAUGE

**WESTMORELAND II**  
 SUPERIOR ORNAMENTAL STEEL FENCING & GATES

8451 HEGERMAN STREET  
 PHILADELPHIA, PA 19136  
 PHONE: 215-335-1681  
 FAX: 215-743-7112

E-MAIL [www.nefiw@comcast.net](mailto:www.nefiw@comcast.net)

PROJECT:	
GATE STYLE:	<b>TACONY STYLE ALUMINUM CANTILEVER SLIDING GATE</b>
DRAWING No.	DATE:
	REV.